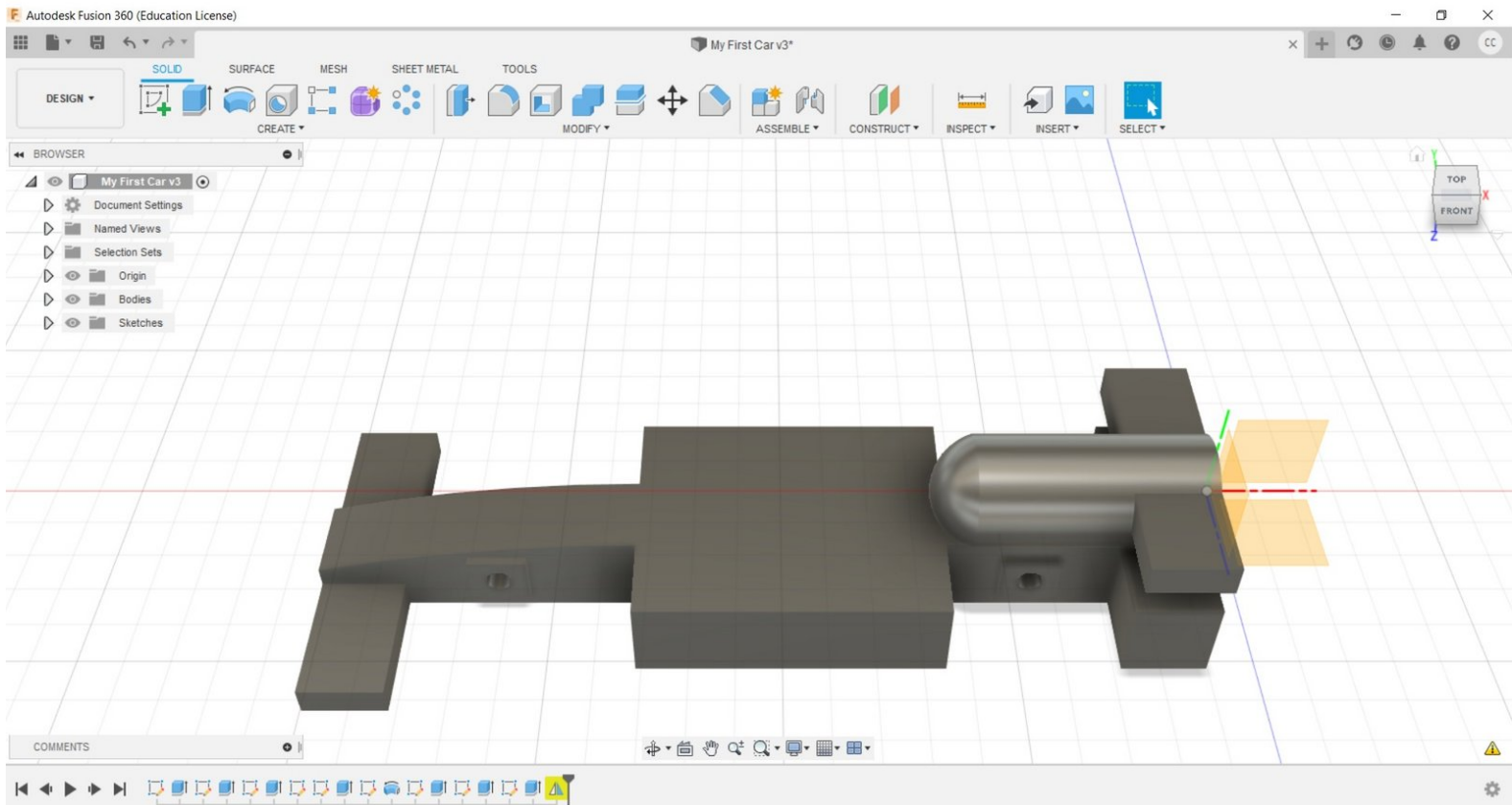


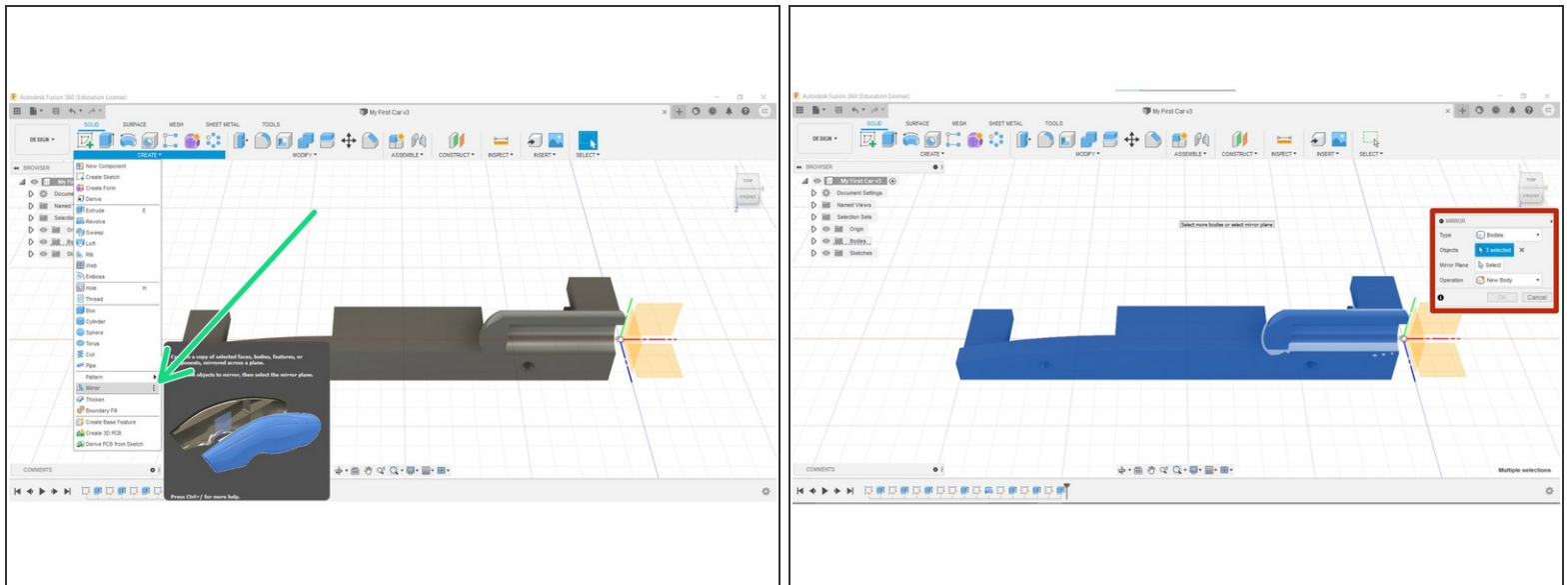


# 8 - Body Mirror

Written By: REA

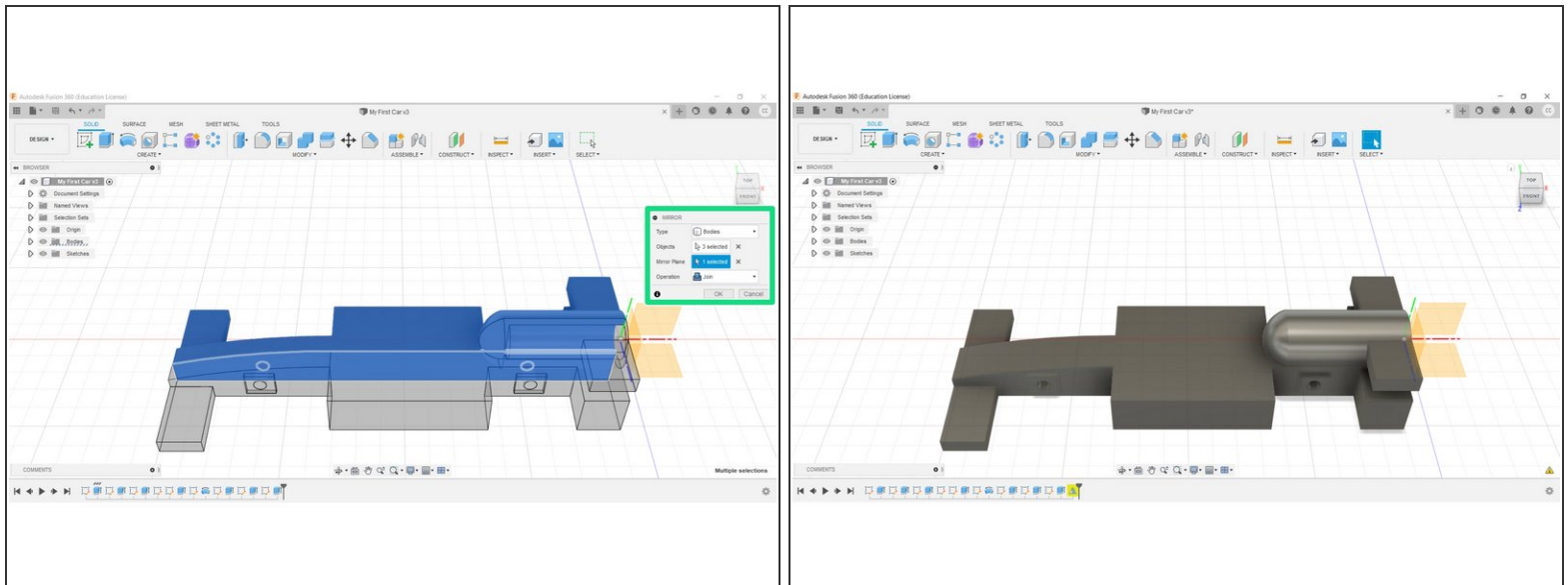


## Step 1 — 8 - Body Mirror



- To complete your car, select the Mirror tool from the Create menu.
- Change the selection option to Bodies.
- Hold the shift key and select all Bodies present.
  - Successful selection will result in the entire car turning blue.

## Step 2



- Select the Mirror Plane function, and select the inner face of the car body.
- Ensure the Mirror Operation is set to join, and click OK
- Congratulations, you have completed this section.