



2. Bottom Fore Cap Assembly

Assemble Components into the Bottom Fore Cap

Written By: REA





TOOLS:

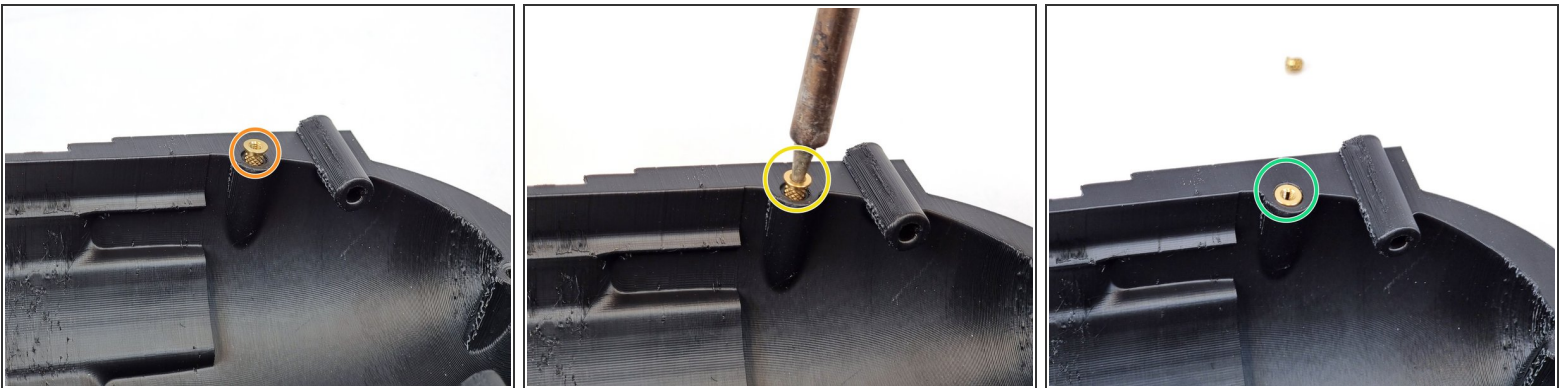
- [Soldering Iron](#) (1)
-

Step 1 — Threaded Inserts



- Find this bag of M3 Threaded Inserts.
- ❗ We heat set these inserts into or 3D Printed components using a soldering iron.

Step 2 — Installing Inserts into Bottom Cap



- Place an insert into the hole. Don't try to insert it all the way.
 - Put the tip of the soldering iron into the insert and as the insert heats up you will be able to gently push it into the hole
 - Push it in until the insert is flush with the surface.
- ✦ Install the other 2 inserts on this side of the cap using the same procedure,

Step 3 — Installing Inserts into Bottom Cap - Continued



- Following the same procedure place the inserts on the bottom of the cap.

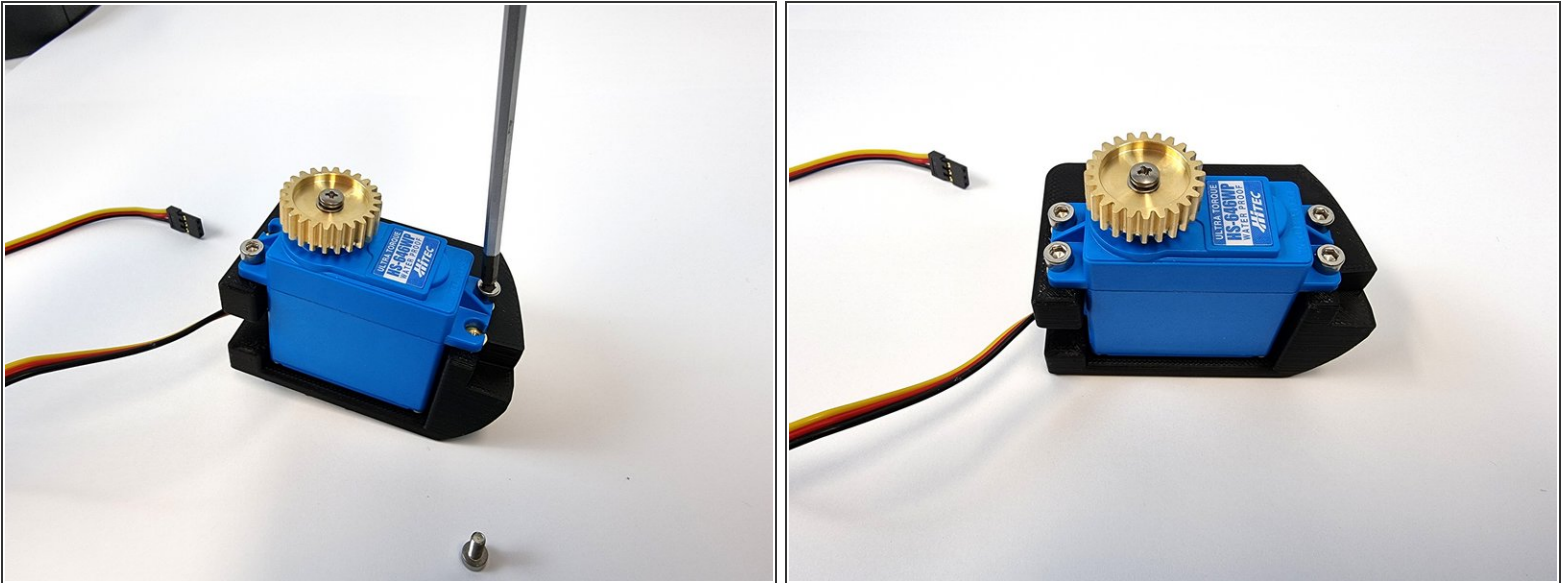
i There are 4 inserts to be inserted on the bottom. These are to screw the cap to the bottom hull.

Step 4 — Fore Servo Mount



- Locate the Fore Servo Mount and prepare to install the threaded inserts
- Install the inserts 4 on the side and 2 on the bottom

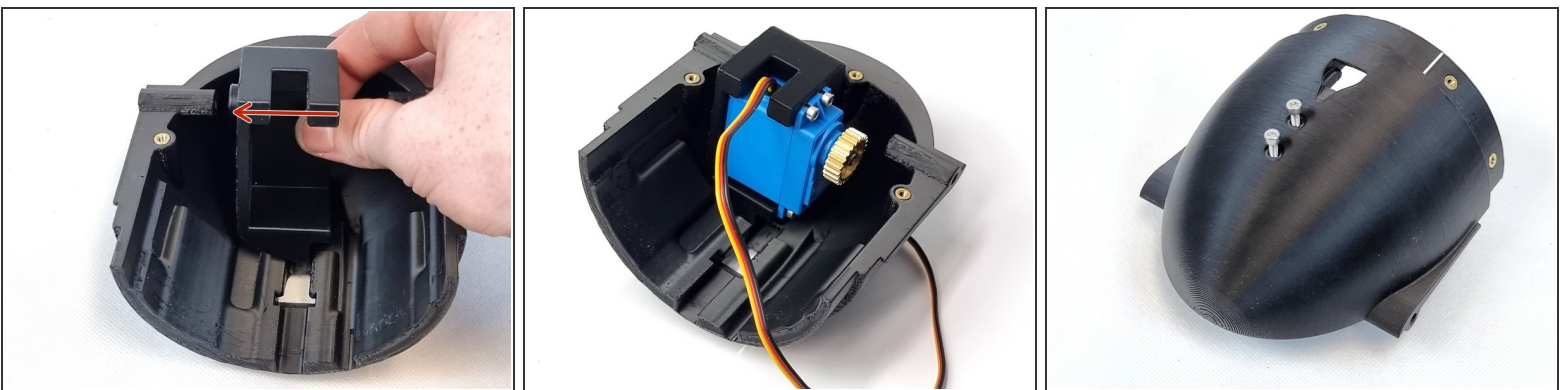
Step 5 — Install the Fore Servo



⚠ Ensure you have waterproofed your servo following this guide before installing it.

- Push the wire through the mount first, followed by the servo.
- Insert the 4 x 8mm Socket Head Cap Screws

Step 6 — Install Servo Mount



- Place the servo mount into the bottom cap and slide it to the left as shown seating it onto the shaft for the control rod.

⚠ Ensure the servo is mounted into the servo mount before installing it.

- Flip the cap over and install 2 x M3 x 12mm socket head cap screws.

The assembly of the Bottom Fore Cap I now complete. You can move onto the next guide